

SKSCF2401P

24-INCH INTEGRATED COLUMN FREEZER



LARGEST CAPACITY COLUMN

Designed to provide the largest capacity in the industry*, the 24-inch Integrated Column Freezer features 13.9 cu. ft. of storage capacity.

SIGNATURE FIT™ INTEGRATED DESIGN

Every integrated column features an intelligent, symmetrical design that allows for flush installation, along with easy door reversal.

BRILLIANT INTERIOR

The glass and metal interior is not only beautiful, it is designed to help the freezer stay at the set temperature by holding and transferring cold fast and efficiently.

DISTINCTIVE ICE

The frustum ice shape gives an air of distinction while the removable clear bin holds up to 5.5 lbs., perfect for entertaining.

ECO FRIENDLY

Engineered to reduce environmental impact and ENERGY STAR® certified.

Style

| | |
|-------------------------|---------------|
| Door Style | Panel Ready** |
| Interior Cabinet Finish | Metal |

Innovation

| | |
|--|-----|
| Wi-Fi Enabled for ThinQ® Control with iPhone / Android App | Yes |
| Remote Operations | Yes |
| Smart Inverter Compressor | Yes |

Performance

| | |
|------------------|-----|
| IcePlus® | Yes |
| Adaptive Defrost | Yes |

Modes

Sabbath, IcePlus®, Demo, Icemaker On / Off, Power On / Off, Temp Control, Water Filter Reset, Smart Diagnosis, Wi-Fi, Smart Grid

| | |
|-------------------------|-----|
| Water Filter (6 Months) | Yes |
|-------------------------|-----|

Capacity and Storage

| | |
|---|--------------------------------------|
| Total Capacity (cu. ft.) | 13.9 |
| Storage Shelves | 3 Adjustable w/LED Lighting, 1 Fixed |
| Lift and Go™ Ice Drawer | 1 Soft Close / Self Close |
| Lift and Go™ Storage Drawers | 2 Soft Close / Self Close |
| Aluminum Framed Lift and Go™ Door Bins with Removable Inserts | 4 Adjustable |
| Removable Ice Bucket Storage Volume | 5.5 lbs. |

*Based on survey of comparable products performed March 1, 2020.

**Shown with professional stainless steel panel and handle accessory kit.

©2025 LG Electronics USA, Inc. All rights reserved. "Signature Kitchen Suite" and the Signature Kitchen Suite logo are registered trademarks of LG Electronics Inc. Design, features and specifications are subject to change without notice. Specifications are for planning purposes only. Consult the product's installation instructions for final dimensional data and other details prior to making cutouts or custom panels. Consult with a heating and ventilation engineer for your specific ventilation requirements. Non-metric weights and measurements are approximate. Smart features require Internet access.

1-855-790-6655 | www.signaturekitchensuite.com

SKSCF2401P

24-INCH INTEGRATED COLUMN FREEZER

General Features

| | |
|--------------------------------------|-----------------------------------|
| Digital Controls w/White LED Display | Yes |
| Water Filter Indicator | Yes |
| Ice Production (24 Hrs.) Cubed | 3.5 lbs. (3.8 lbs. with IcePlus®) |
| Ice On / Off | Yes |
| Hidden LED Interior Lighting | Yes |
| Operating Temperatures | -6° to 8° F |
| Maximum Sound Level (dBA) | 39 dBA |
| Star-K Certified Sabbath Mode | Yes |
| ENERGY STAR® Certified | Yes |

Installation Features

| | |
|---|----------------------------|
| Reversible Door | Yes |
| Four Point Front Adjustable with 8 Wheels | Yes |
| Attachment Method to Cabinetry | Top with No Visible Screws |
| Front Serviceable | Yes |
| Anti-tip Bracket Included | Yes |
| Joining Kit for Dual Column Installation Included (SKSFJ800P) | Yes |

Technical Specs

| | |
|-----------------------|----------------------|
| Required Power Supply | 115 V, 60 Hz, 15 Amp |
| Plug Type | 3-Prong |
| Power Cord Length | 86 1/2" |

Dimensions and Weight

| | |
|---|-----------------------------|
| Overall Width (inches) | 23 3/4" |
| Overall Height (inches) | 83 1/2" Min. – 84 1/2" Max. |
| Overall Depth Without Panel or Handles (inches) | 23 7/8" |
| Net Weight (approx.) | 346 lbs. |
| Shipping Weight (approx.) | 396 lbs. |

Optional Accessories

| | |
|---|-----------|
| Replacement Water Filter | LT1000P-S |
| Refer to last page for additional accessories | |

Warranty Summary*

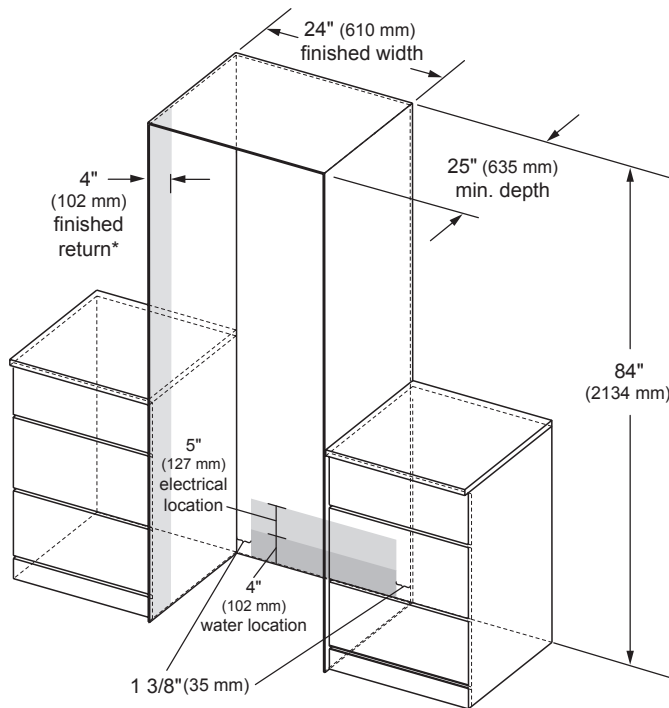
| | |
|---|----------|
| Limited Warranty, Parts & Labor | 3 Years |
| Limited Warranty, Sealed System and Compressor, Parts & Labor | 5 Years |
| Limited Warranty Compressor, Parts Only | 10 Years |

*These warranties give you specific legal rights and you may have other rights that vary from state to state. For complete warranty details, refer to your Use & Care manual.

SKSCF2401P 24-INCH INTEGRATED COLUMN FREEZER

CUTOUT DIMENSIONS – FLUSH INSTALLATION

SINGLE COLUMN



* A minimum 4" (102 mm) finished return that matches the cabinet exterior is recommended on all sides and the top of the cutout opening. The shaded area will be visible after installation.

Notes

Freezer can be installed flush with 3/4" custom panel or optional stainless steel panel kit.

With a 25" (635 mm) cutout depth, the front face of the freezer fits flush with 25" (635 mm) depth adjacent cabinets.

Electrical

A 115V, 60Hz., 15 amp power supply is required. An individual properly grounded branch circuit or circuit breaker is recommended. Install a properly grounded 3-prong electrical receptacle recessed into the back wall. Electrical must be located on rear wall as shown.

Note: GFI (ground fault interrupter) is not recommended.

Water Line

A cold water supply is required for automatic icemaker operation. Water pressure must be between 20 and 120 p.s.i.

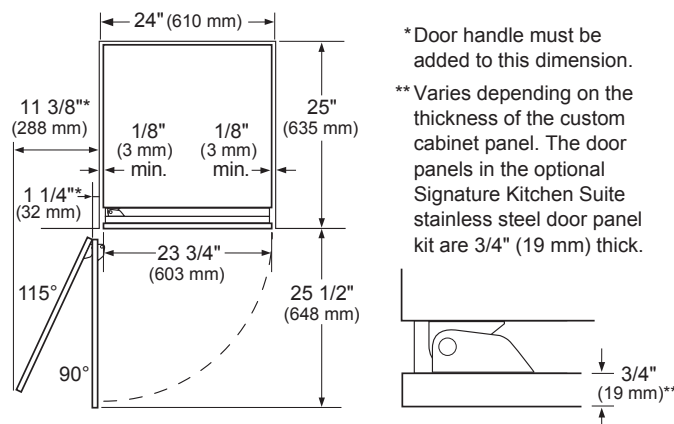
Tubing should be long enough to extend to the front of the freezer. Allow enough tubing to accommodate a bend leading into the water line connection.

Water line can enter an opening through floor or back wall.

Install a shut-off valve between the icemaker water valve and cold water supply in the home.

INSTALLATION CLEARANCES – FLUSH INSTALLATION

TOP VIEW



Notes

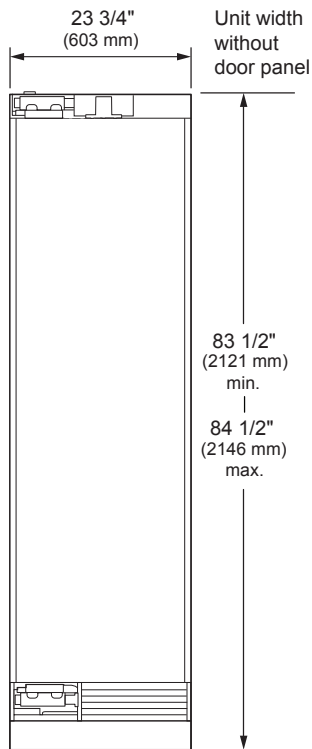
Door Swing Clearances – The installation must allow for clearances to adjacent walls or cabinets. This freezer is equipped with a 2-position door stop. The factory-set 115° door swing can be adjusted to 90° if clearance to adjacent cabinets or walls is restricted.

Door Handle Clearances – The Door Handle depth must be added to the dimension noted to determine the total clearances required from adjacent cabinets or walls. This clearance will vary depending on the custom handle used. When using the Stainless Steel Door Panel Kit w/Handle or the Brushed Aluminum Handle (optional accessories), the door handle clearance with door open 115° is 14" (356 mm).

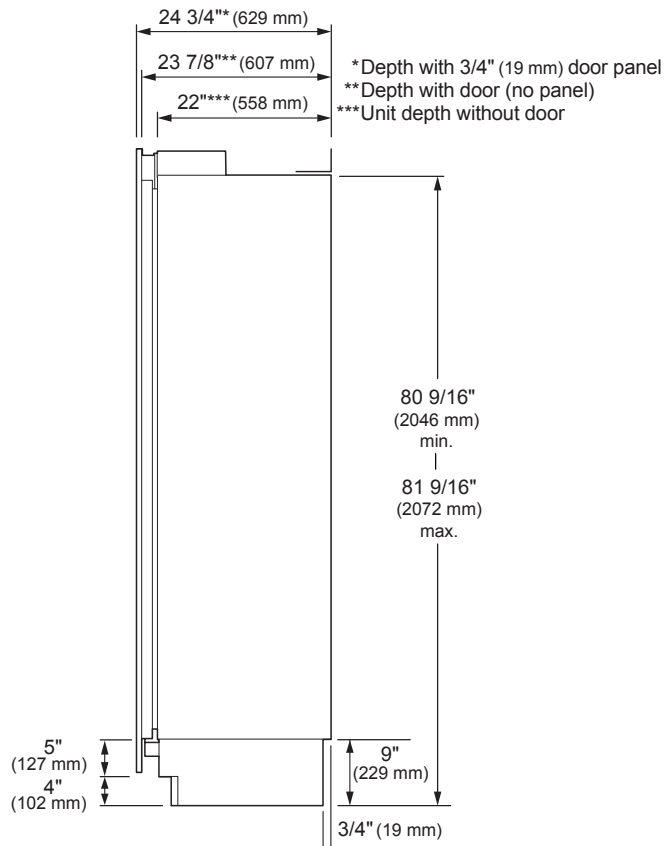
SKSCF2401P
24-INCH INTEGRATED COLUMN FREEZER

OVERALL PRODUCT DIMENSIONS

FRONT VIEW

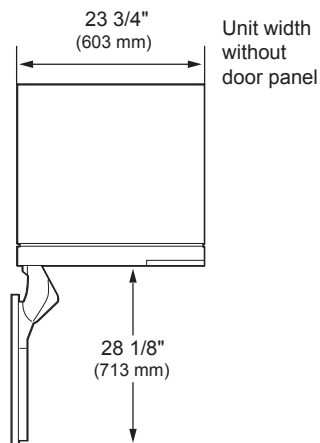


SIDE VIEW

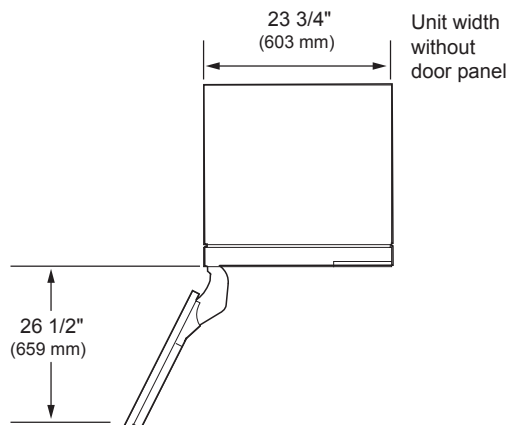


TOP VIEW

DOOR OPEN 90°



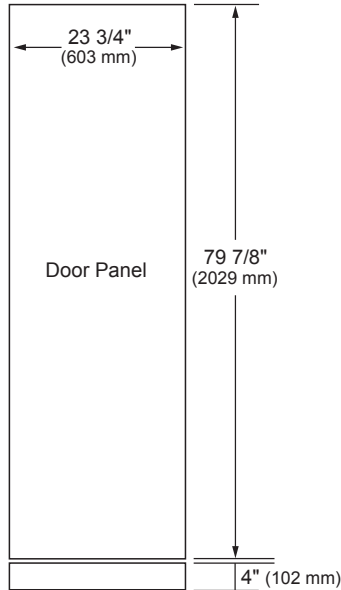
DOOR OPEN 115°



SKSCF2401P

24-INCH INTEGRATED COLUMN FREEZER

CUSTOM PANEL DIMENSIONS



Notes

These units are designed to be customized with decorative panels. Field-installed custom door panels or an optional Stainless Steel Panel Kit is required.

For Custom Panels: Use templates provided with units to pre-drill holes for mounting panel brackets (provided with unit). Adjustment screws and instructions also provided with units.

Maximum Total Door Panel Weights:
 30-Inch Integrated Column – 64 lbs.
 24-Inch Integrated Column – 53 lbs.
 18-Inch Integrated Column – 44 lbs

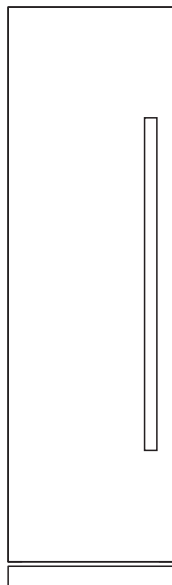
Design Tips

4" (102 mm) will be visible on the interior sides of the furniture return. It is recommended that both sides of each cutout panel be finished to match the cabinet exterior.

If using custom panels, a custom toe kick is required. The bottom of case is unfinished.

Door Handles: Handles are not included with the units. Custom handles are required for installation. Brushed Aluminum Handles are available as an optional accessory.

OPTIONAL ACCESSORIES



| | Professional | Transitional |
|--|--------------|--------------|
| Stainless Steel Panel / Handle / Toekick Kit | SKSPK245CS | SKSPK245CMT |
| Retrofit Frame Kit | SKSFK800CS | |
| Brushed Aluminum Handle | | |
| Medium – 31 11/16" | SKSHK310HS | SKSHK310HST |
| Long – 48" (For Columns) | SKSHK480HS | SKSHK480HST |

Included Accessories

Joining Kit for Dual Column Installation (SKSFJ800P)

Refer to the Integrated and Built-in Refrigeration Planning / Installation Guide for details on installing multiple columns, door swing dimensions, cabinet planning, retrofit installation and more.